

# LED VBA10-2000a

Part #: EBVBA10DM/B/4W/280/360D/24K/E12/A Lamp Class: BA10



## Product Description

**LED VBA10-2000e** delivers superior brightness, valuable energy savings and long lasting performance. LED Filaments along with heat-sink absence unmistakably mimic traditional bulb styles while providing greater light distribution. This BA10 Class LED bulb comes in 2400K CCT (*Warm White*) for charming and hospitable environments. Enjoy features such as: instant on, dimming options, full beam spread and mercury free.



**Estimated Energy Cost: \$0.48 per year**

\*Note: Design, features and specifications subject to change without notice. Some features may not be available on all models. Please visit [www.eurilighting.com](http://www.eurilighting.com) or call 1-888-743-5766 for more information.

## Technical Specifications

Body Type	CCT	Input Power	Input Voltage	Lumen Output	Beam Angle	Center Beam	CRI	Luminous Efficacy	Power Factor	Input Current	Base	Lamp Lifespan
Amber Glass	2400 K	4 W	120 V	280 lm	360°	N/A	75	70 lm/W	0.9	0.03 A	E12	15,000 Hrs.

### Product Features & Benefits



Dimmable



Instant-On/Off



Mercury Free

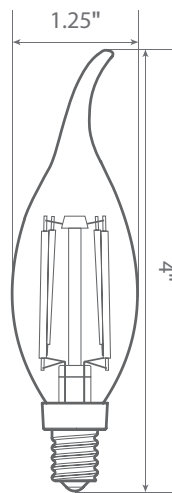


Damp Rated

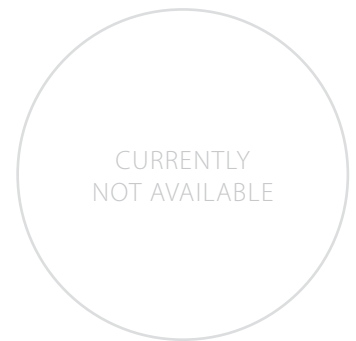


Full Beam Spread

### Product Dimensions



### Product Photometric Data



**Euri Lighting** | A Division of **IRTRONIX** Inc.