



# LED EB40-2050e

Part #: EBBR40DM/B/15W/1100/120D/50K/E26/E    Bulb Class: BR40



## Product Description

**LED EB40-2050e** delivers superior brightness, valuable energy savings and long lasting performance. This flood BR40 LED bulb is ideal for ambient lighting due to its uniform \*cool white light (5000K) replacing conventional 85 Watt incandescent bulbs. Built-in MCOB LED Technology offers exceptional light uniformity, energy efficiency, and optimal heat dissipation guaranteeing durability and constant bulb performance. Enjoy features such as: instant on, dimming options, shatter resistance and mercury free.



**Estimated Energy Cost:** \$1.80 per year

\*Note: Design, features and specifications subject to change without notice. Some features may not be available on all models. For more information regarding dimmer compatibility please visit: [www.eurilighting.com](http://www.eurilighting.com) or call 1-888-743-5766

**MCOB**  
LED TECHNOLOGY

**85W**  
REPLACEMENT

## Specifications

Input Power	Input Voltage	Lumen Output	Beam Angle	CCT	CRI
15 W	120 V	1100 lm	120°	5000 K	80
Luminous Efficacy	Power Factor	Input Current	Base/Cap	Lamp Lifespan	
73 lm/W	0.9	0.1 A	E26	25,000 Hrs.	

### Product Features



Dimmable



Instant-On/Off

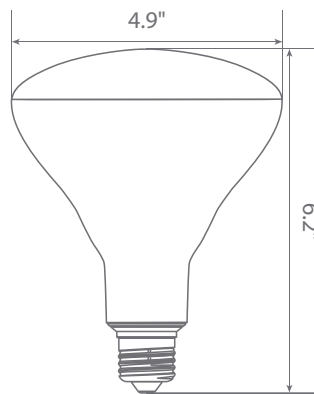


Mercury Free

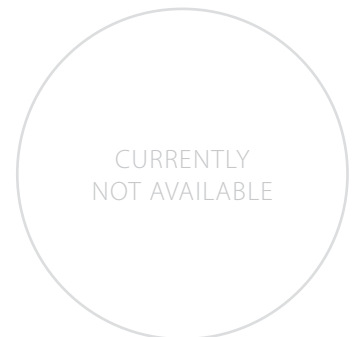


Damp Rated

### Product Dimensions



### Product Photometric Data



**Euri Lighting | A Division of IRTRONIX Inc.**

20900 Normandie Bldg. Suite B Torrance, CA 90502 | Tel: 888.743.5766 | Fax: 310.787.1166 | [www.eurilighting.com](http://www.eurilighting.com)  
©2017 Euri Lighting. All Rights Reserved