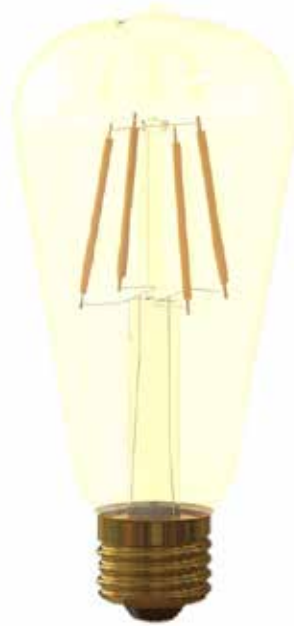




LED VST19-2000ea

Part #: EBVST19DM/B/4.9W/450/360D/22K/E26/E/A Lamp Class: ST19



Product Description

LED VST19-2000ea delivers superior brightness, valuable energy savings and long lasting performance. LED Filaments along with heat-sink absence unmistakably mimic traditional bulb styles while providing greater light distribution. This ST19 Class LED bulb comes in 2200K CCT (*Warm White*) for charming and hospitable environments. Enjoy features such as: instant on, dimming options, full beam spread and mercury free.



Estimated Energy Cost: \$0.59 per year

*Note: Design, features and specifications subject to change without notice. Some features may not be available on all models. Please visit www.eurilighting.com or call 1-888-743-5766 for more information.

Technical Specifications

Body Type	CCT	Input Power	Input Voltage	Lumen Output	Beam Angle	Center Beam	CRI	Luminous Efficacy	Power Factor	Input Current	Base	Lamp Lifespan
Amber Glass	2200 K	4.9 W	120 V	450 lm	360°	N/A	75	91 lm/W	0.9	0.04 A	E26	15,000 Hrs.

Product Features & Benefits



Dimmable



Instant-On/Off



Mercury Free

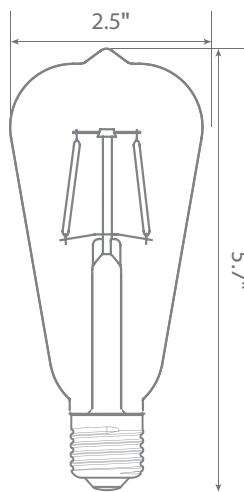


Damp Rated

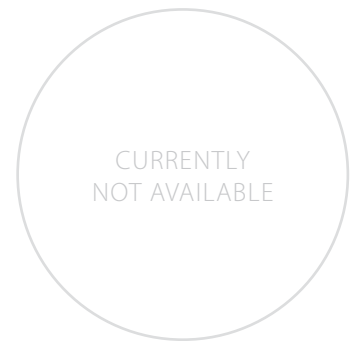


Full Beam Spread

Product Dimensions



Product Photometric Data



Euri Lighting | A Division of ITRONIX Inc.

20900 Normandie Avenue Bldg. B, Torrance, CA 90502 | Tel: 888.743.5766 | Fax: 310.787.1166 | www.eurilighting.com
 ©2017 Euri Lighting. All Rights Reserved